

# Irwin Eagles Disc Golf Course



The Irwin Eagles Disc Golf Course is located on the Irwin Public School grounds and is not permitted during school hours. Please plan your visit accordingly.

#

par



ft/n

# gles ourse

se is located on  
and access is  
rs! Please plan



Target / bunker



Red / Reception  
Number -  
players on



Fairway / path



Hole transition  
hole to the

asket location.

reational Tee Box with Hole  
Recommended for recreational  
r those new to the sport.

Hole route

sitions - follow from end of one  
e beginning of the next.



60 HY

60 HY

Dwight







# Disc Rules, and Et

---

## **Objective of the Game**

Disc Golf is played like traditional golf, but instead of balls and clubs. Once the time the disc is thrown and where it lands, the goal is to play each hole in the fewest number of throws. The player with the lowest total score wins.

## **SAFETY FIRST**

# Disc Golf Safety Etiquette

---

onal golf, but with disc golf discs  
e throw (stroke) is counted each  
hen a penalty is incurred. The  
e fewest strokes possible. The  
rokes for the entire course wins.

①	3	275/84
②	3	183/56
③	3	130/40
④	3	170/52
⑤	3	244/74
⑥	3	276/84
⑦	3	181/55
⑧	3	218/66
⑨	3	157/48



4

6

0

2

4

4

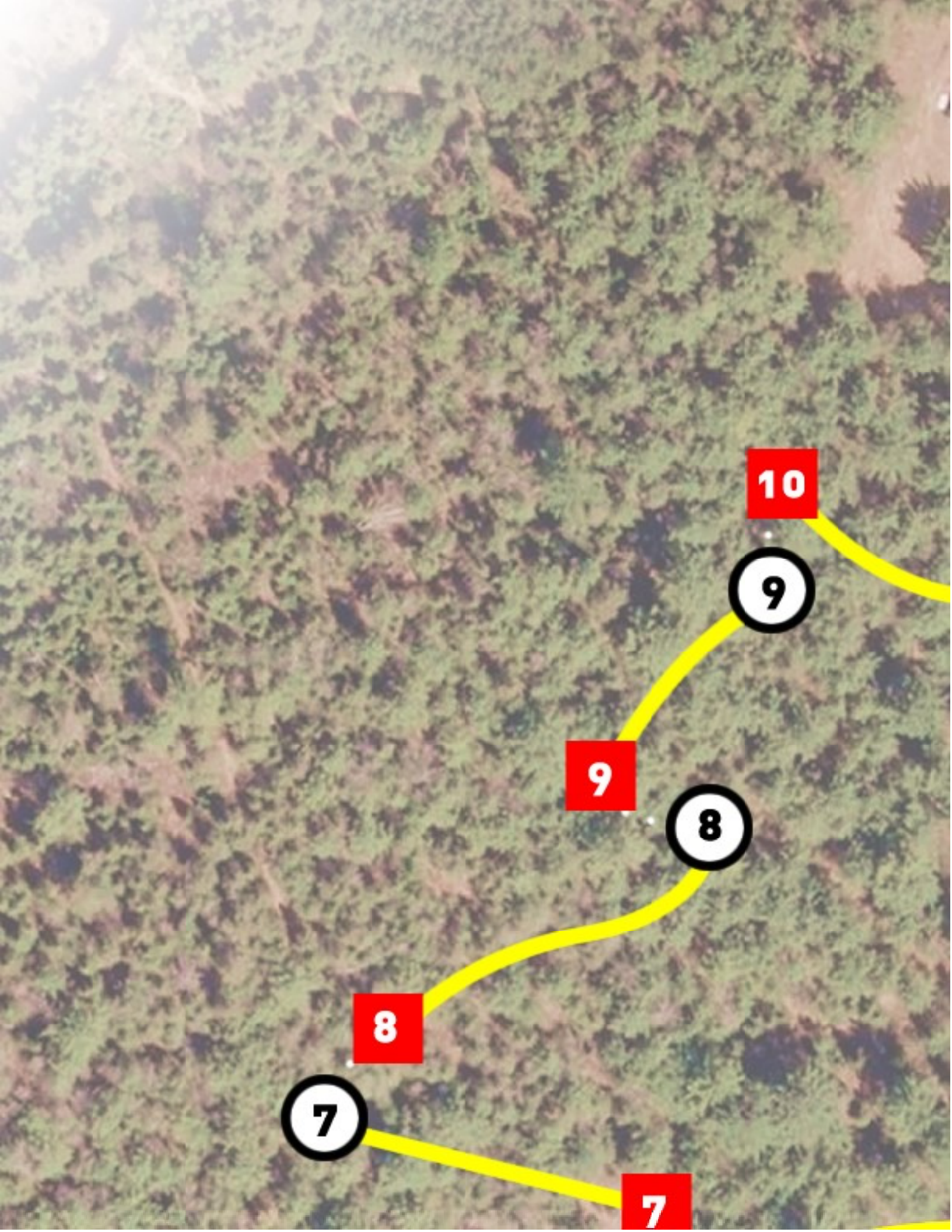
6

6

3







10

9

9

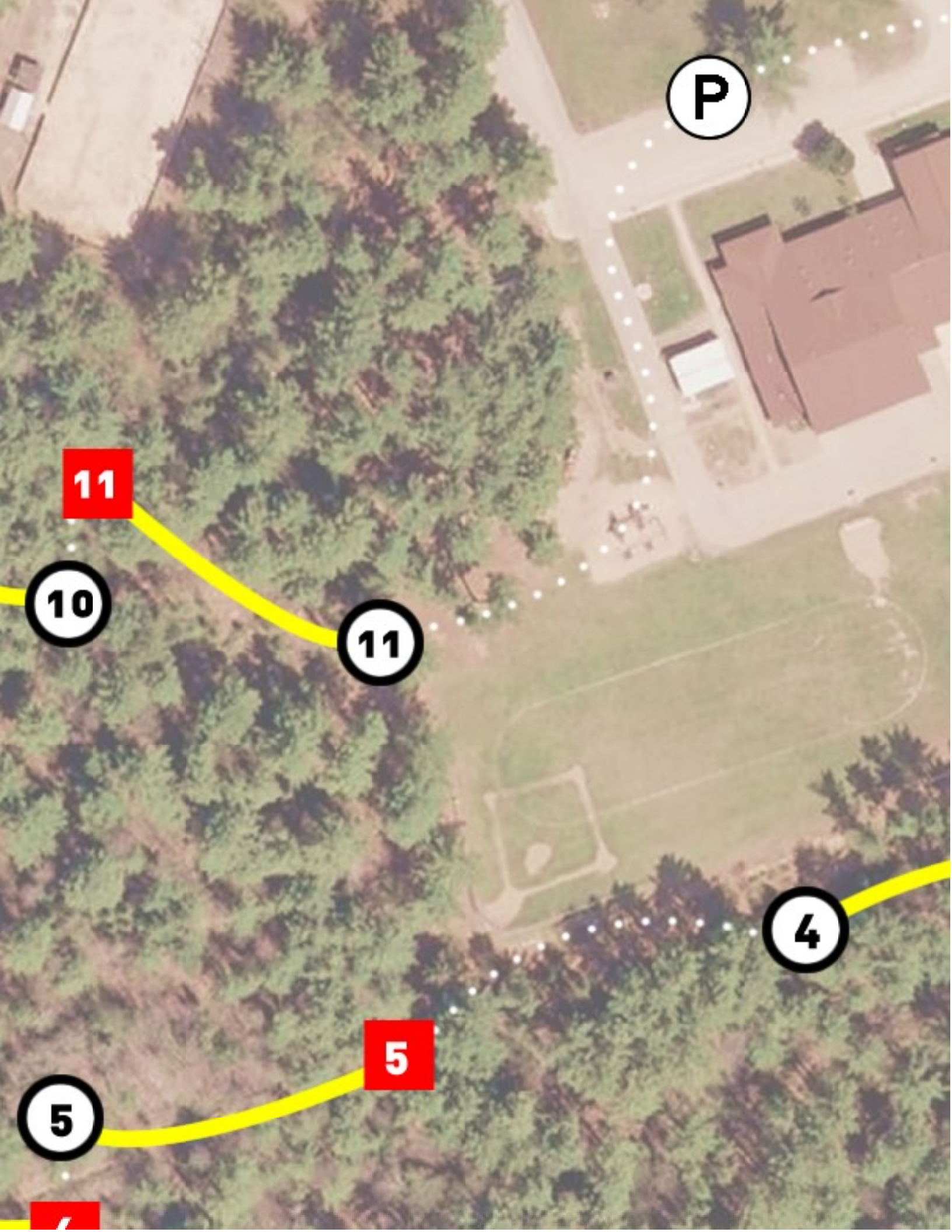
8

8

7

7





P

11

10

11

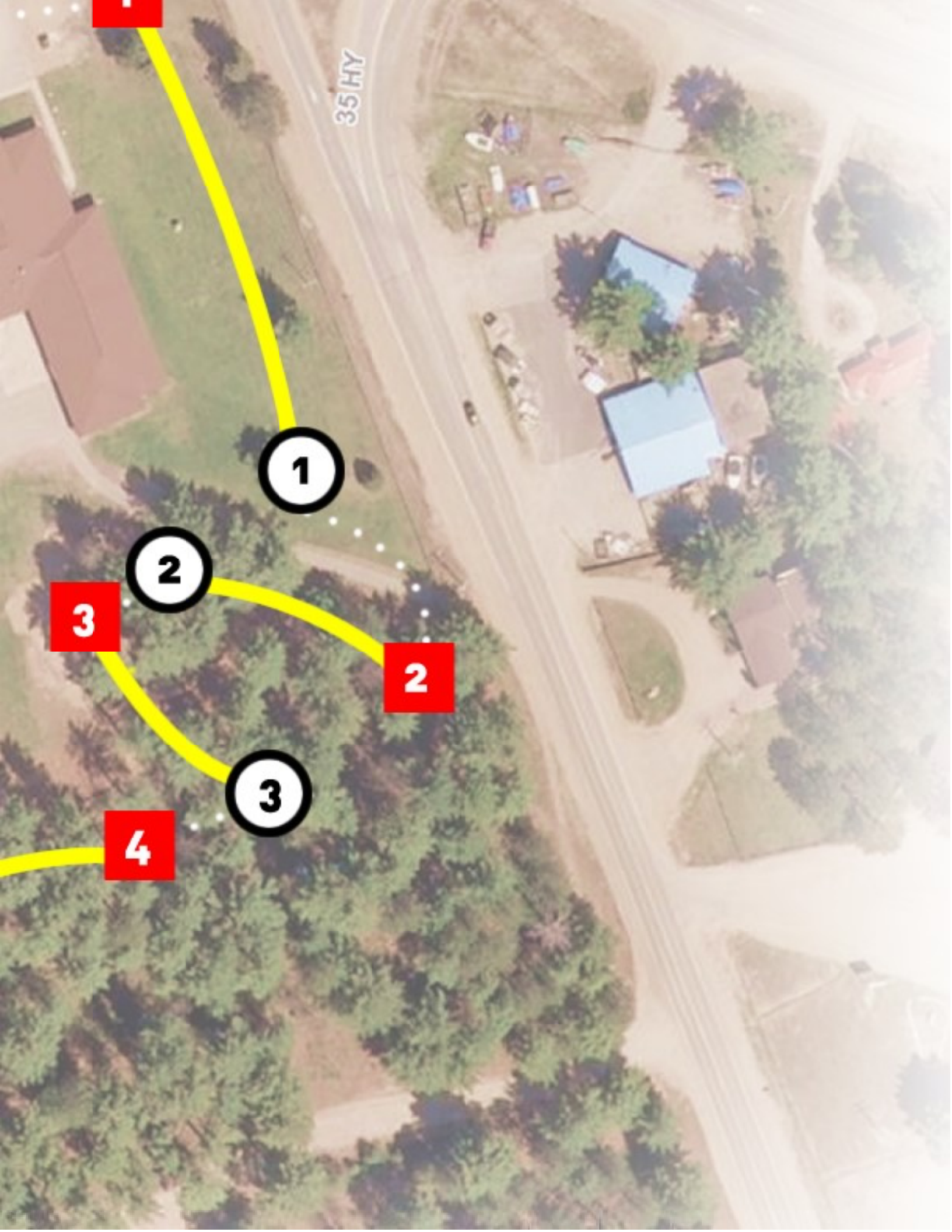
4

5

5

6





Never throw when other players are within range. Always give pedestrians a wide berth. Always be aware of your surroundings and the safety of others.

## **Tee Throws**

Each hole begins with a tee throw. The tee throw must be completed within or behind the designated area.

## **Lie**

The lie is the spot where the player's disc lands. Mark each lie with a tee marker. The player whose disc is closest to the hole is the first to throw. The player whose disc is furthest from the hole is the last to throw. The player whose disc is in the hole is the first to throw. The player whose disc is in the hole is the first to throw.

## **Throwing Order**

The player with the least amount of strokes to reach the hole is the first to tee off on the hole. The player with the most strokes to reach the hole is the last to tee off. The player whose disc is closest to the hole is the first to throw. The player whose disc is furthest from the hole is the last to throw. The player whose disc is in the hole is the first to throw. The player whose disc is in the hole is the first to throw.

## **Fairway Throws**

Fairway throws must be made from the fairway. The player whose disc is closest to the hole is the first to throw. The player whose disc is furthest from the hole is the last to throw. The player whose disc is in the hole is the first to throw. The player whose disc is in the hole is the first to throw.



ers or other pedestrians are  
estrians the right of way. Be  
nd environment at all times.

row. Tee throws must be  
e designated tee area.

player's previous throw has  
mini marker disc or leave the  
ere it landed. The player's  
om directly behind the marked lie.

unt of strokes on the previous  
e next hole. After all players have  
c is farthest from the target  
by the next farthest, and so on.

e from directly behind the lie. A

10

3

178/54

11

3

214/65

---

**33**

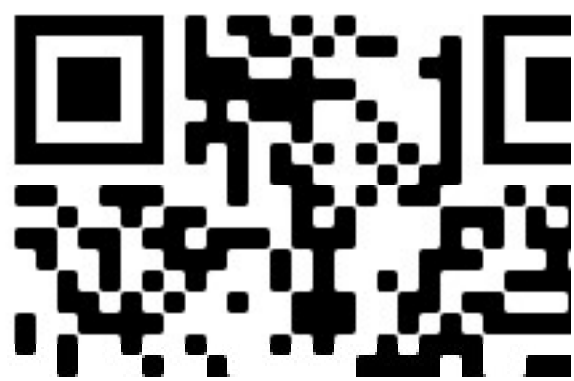
**2216/6**



**Irwin Eagle**

Dwight, ON

[discgolfmuskoka.com](http://discgolfmuskoka.com)





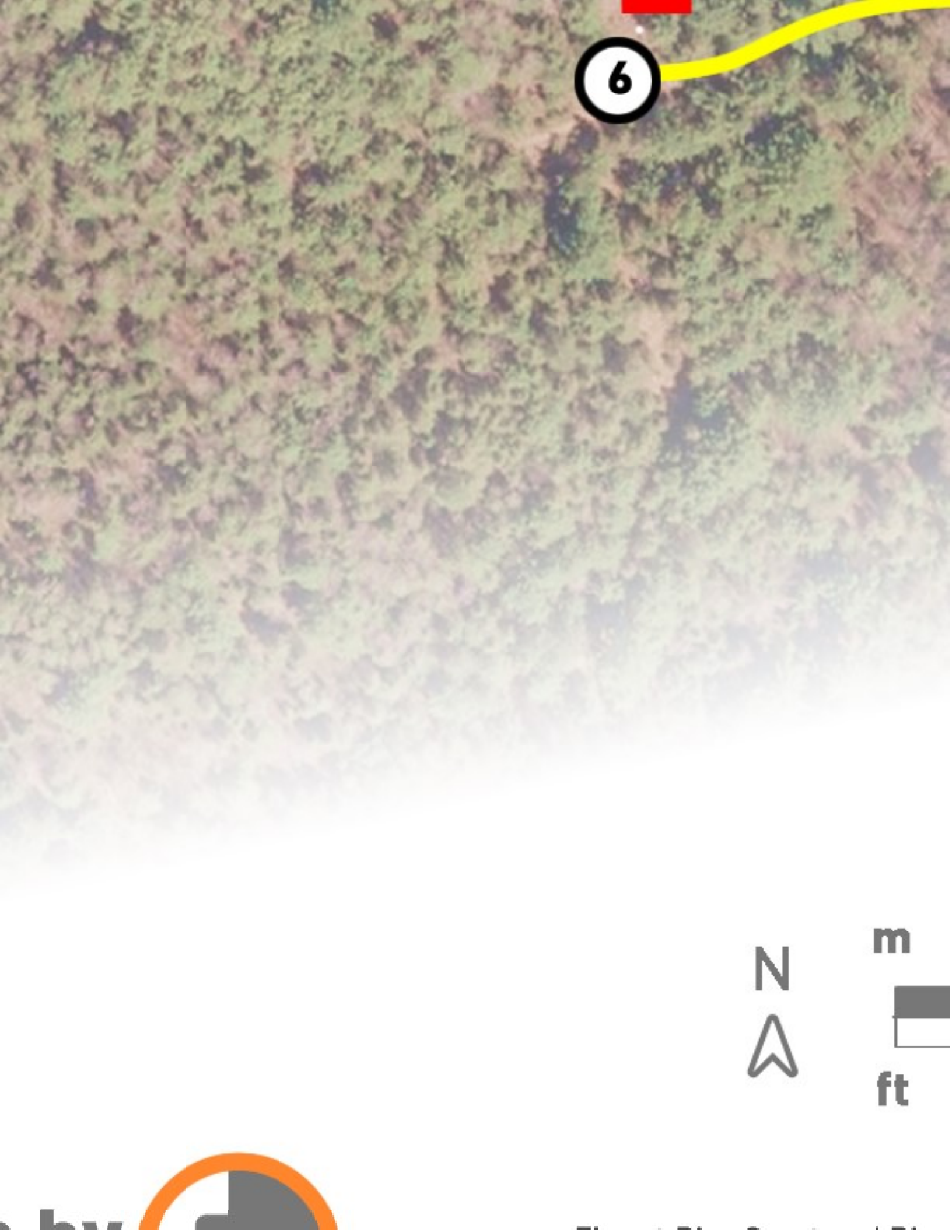
75

les DGC

om/courses/**irwin-eagles**

Q  
F.  
S

course mon



6



m



ft







10

20

30

40

50



50

100

150





# DISC GOLFER'S

# CODE

PDGA



PROFESSIONAL  
DISC GOLF  
ASSOCIATION


## 1 PLAY SMART

Never throw into a blind area or when players, spectators, pedestrians, or other facility users are within range. Use a spotter.

## 2 RESPECT THE COURSE

Observe all posted rules. No littering, graffiti, or abuse of equipment or flora.

## 3 REPRESENT THE SPORT



run-up and normal follow-through unless the lie is within 10 meters of the target requiring balance and not move past the

## **Mandatory**

A mandatory, or mando, is one of the poles in the fairway that must be indicated by an arrow. If the disc is mandatory, either play from the drop zone area if applicable and

## **Completion Of Hole**

A disc that comes to rest in the hole or in the chains constitutes the completion of the hole.

## **Out Of Bounds**

If any area of O.B. is visible before the disc is considered O.B. A throw must be played from a point upwind where the disc crossed over the

ough, after release, is allowed,  
ers of the target. Any shot within  
es that the player maintain  
e lie until the disc comes to rest.

e or more designated trees or  
be passed to the correct side as  
isc passes to the wrong side of  
ne previous lie or from a marked  
nd add a one throw penalty.

e disc golf basket or suspended  
successful completion of that

tween the disc and O.B. line, then  
hrow that lands out of bounds,  
p to 1 meter in bounds from  
he out of bounds line. O.B. zones









Golf Muskoka assume no liability for the accuracy of the map, either expressed or implied. Play at your own risk.

Be positive and responsible. Teach others.



are indicated on the course map  
hazards, roads/parking areas  
also considered out of bounds

map, however, permanent water  
, and property boundaries are  
5.